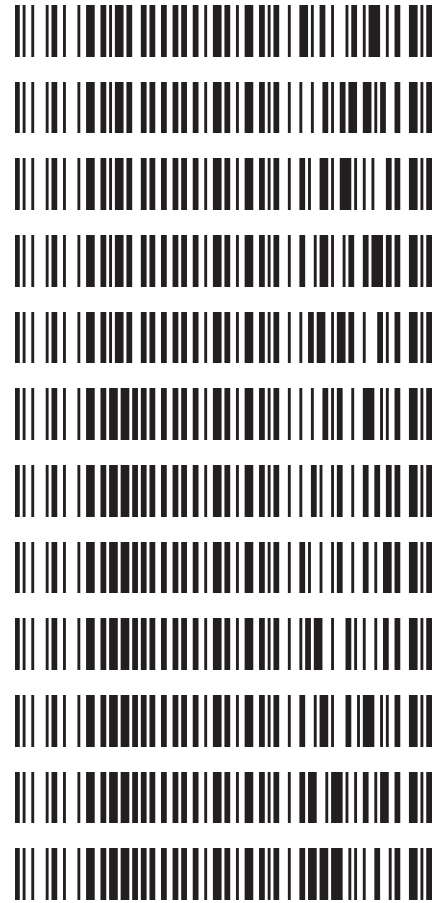




cg

Worklist: 2002

<u>LAB_CASE</u>	<u>ITEM</u>	<u>TASK_ID</u>	<u>DESCRIPTION</u>
M2017-4733	1	99585	AM 3 Urine Carboxy-THC
M2017-4779	2	99584	AM 3 Urine Carboxy-THC
M2017-4840	3	99586	AM 3 Urine Carboxy-THC
M2017-4946	3	99587	AM 3 Urine Carboxy-THC
M2017-5089	4	99588	AM 3 Urine Carboxy-THC
P2017-2464	1	99589	AM 3 Urine Carboxy-THC
P2017-2476	1	99591	AM 3 Urine Carboxy-THC
P2017-2486	2	99590	AM 3 Urine Carboxy-THC
P2017-2510	1	99592	AM 3 Urine Carboxy-THC
P2017-2577	1	99593	AM 3 Urine Carboxy-THC
P2017-2587	2	99595	AM 3 Urine Carboxy-THC
P2017-2611	1	99594	AM 3 Urine Carboxy-THC



Data Path : C:\My Files\cshrum\Desktop\Consolidated\Data\111417 U CANN\
Data File : THC-NC.D
Acq On : 14 Nov 2017 9:57
Operator : District 5 Forensic Services
Sample : Negative Control
Misc : Lot # POC112116; AM #3 Worklist 2002
ALS Vial : 1 Sample Multiplier: 1

Integration Parameters: events.e
Integrator: ChemStation

Method : C:\gcms\1\methods\TOX.M
Title :

Signal : EIC Ion 371.00 (370.70 to 371.70): THC-NC.D\data.ms

peak #	R.T. min	first scan	max scan	last scan	PK TY	peak height	corr. area	corr. % max.	% of total
--------	----------	------------	----------	-----------	-------	-------------	------------	--------------	------------

No peaks were detected using the method integration parameters!
Signal : EIC Ion 473.00 (472.70 to 473.70): THC-NC.D\data.ms

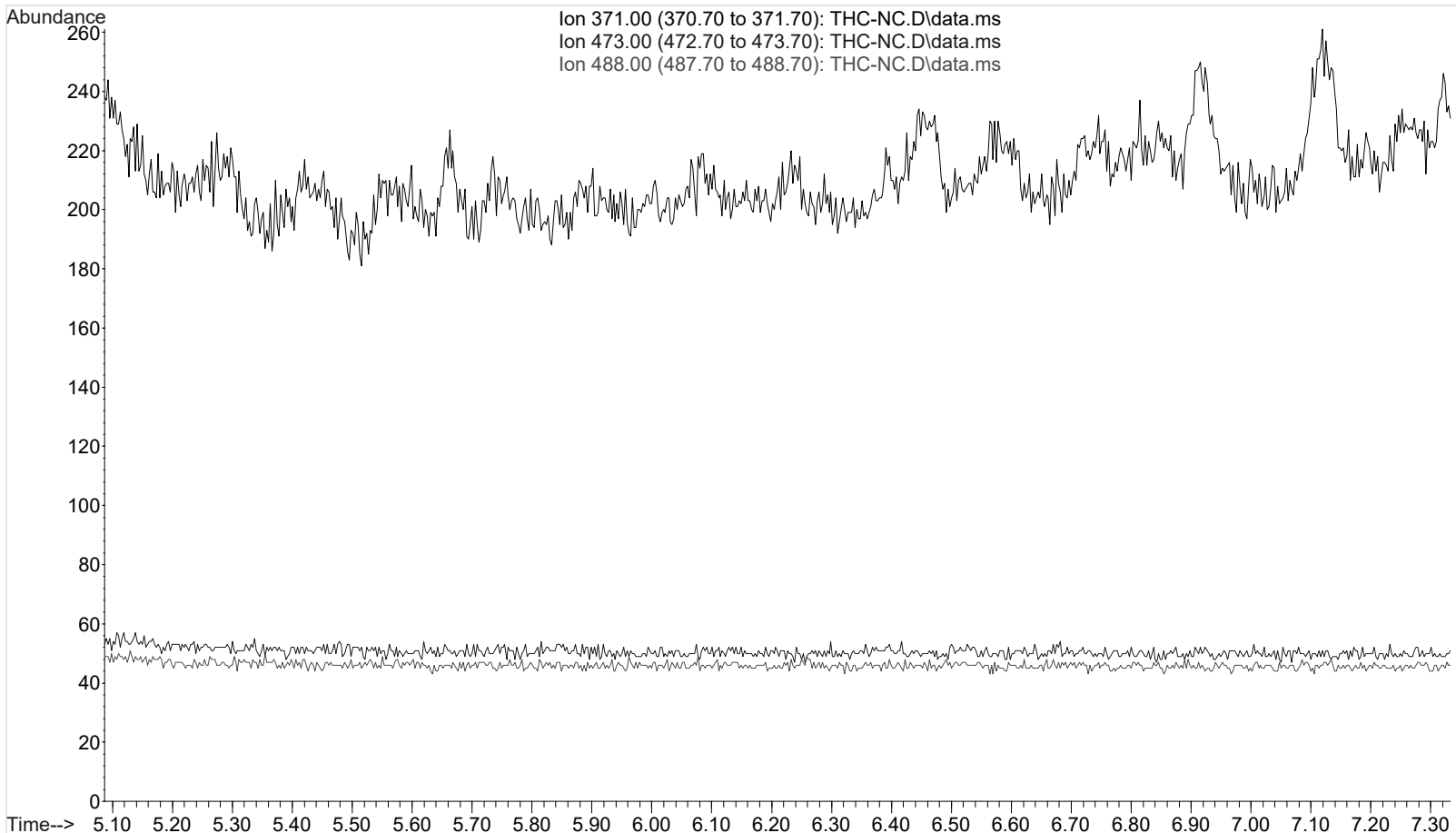
peak #	R.T. min	first scan	max scan	last scan	PK TY	peak height	corr. area	corr. % max.	% of total
--------	----------	------------	----------	-----------	-------	-------------	------------	--------------	------------

No peaks were detected using the method integration parameters!
Signal : EIC Ion 488.00 (487.70 to 488.70): THC-NC.D\data.ms

peak #	R.T. min	first scan	max scan	last scan	PK TY	peak height	corr. area	corr. % max.	% of total
--------	----------	------------	----------	-----------	-------	-------------	------------	--------------	------------

No peaks were detected using the method integration parameters!

TOX.M Wed Nov 15 07:50:23 2017



Area Percent Report

CS

Data Path : C:\My Files\cshrum\Desktop\Consolidated\Data\111417 U CANN\
Data File : THC-PC1.D
Acq On : 14 Nov 2017 10:08
Operator : District 5 Forensic Services
Sample : Spiked Positive c-THC Control
Misc : c-THC lot # 0497429 in Negative Lot # POC112116; Worklist 2002
ALS Vial : 2 Sample Multiplier: 1

Integration Parameters: events.e
Integrator: ChemStation

Method : C:\gcms\1\methods\TOX.M
Title :

Signal : EIC Ion 371.00 (370.70 to 371.70): THC-PC1.D\data.ms

peak #	R.T. min	first scan	max scan	last scan	PK TY	peak height	corr. area	corr. % max.	% of total
1	5.214	33	45	71	PV	218	3565	20.64%	8.572%
2	5.664	191	201	214	VV	115	1711	9.91%	4.114%
3	6.478	456	484	503	VV 2	766	17271	100.00%	41.529%
4	6.716	541	567	585	VV	110	3550	20.55%	8.535%
5	6.853	585	614	623	VV	110	4737	27.43%	11.392%
6	6.918	623	637	660	VV	207	6133	35.51%	14.747%
7	7.113	687	705	724	PV	171	4621	26.76%	11.112%

Sum of corrected areas: 41588
Signal : EIC Ion 473.00 (472.70 to 473.70): THC-PC1.D\data.ms

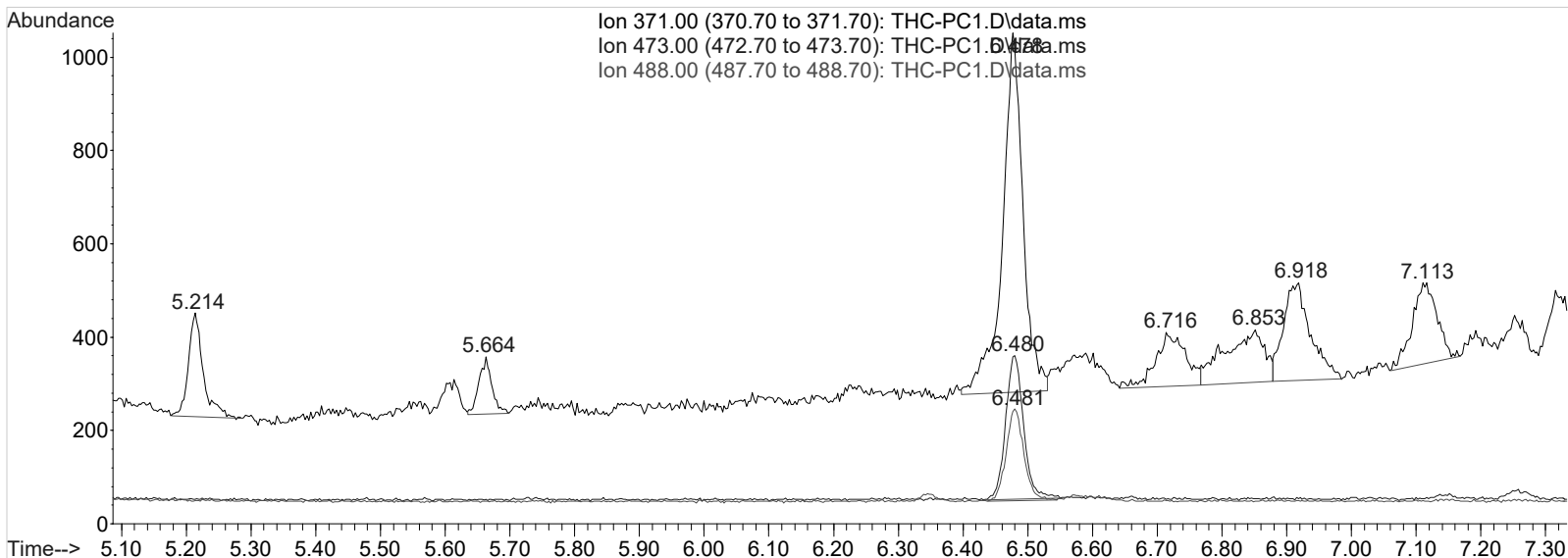
peak #	R.T. min	first scan	max scan	last scan	PK TY	peak height	corr. area	corr. % max.	% of total
1	6.480	469	485	509	BB 2	307	6049	100.00%	100.000%

Sum of corrected areas: 6049
Signal : EIC Ion 488.00 (487.70 to 488.70): THC-PC1.D\data.ms

peak #	R.T. min	first scan	max scan	last scan	PK TY	peak height	corr. area	corr. % max.	% of total
1	6.481	470	485	508	BB 2	195	3773	100.00%	100.000%

Sum of corrected areas: 3773

TOX.M Wed Nov 15 07:48:07 2017



Data Path : C:\My Files\cshrum\Desktop\Consolidated\Data\111417 U CANN\
Data File : THC-PC2.D
Acq On : 14 Nov 2017 18:05
Operator : District 5 Forensic Services
Sample : Spiked Positive c-THC Control
Misc : c-THC lot # 0497429 in Negative Lot # POC112116; Worklist 2002
ALS Vial : 2 Sample Multiplier: 1

Integration Parameters: events.e
Integrator: ChemStation

Method : C:\gcms\1\methods\TOX.M
Title :

Signal : EIC Ion 371.00 (370.70 to 371.70): THC-PC2.D\data.ms

peak #	R.T. min	first scan	max scan	last scan	PK TY	peak height	corr. area	corr. % max.	% of total
1	5.211	24	44	60	BV	194	2797	12.36%	6.493%
2	5.604	169	181	189	BV	319	4554	20.12%	10.572%
3	5.659	189	200	216	VV	144	2391	10.56%	5.551%
4	6.473	455	483	498	BV	1127	22639	100.00%	52.555%
5	6.907	621	633	651	VV	189	4602	20.33%	10.683%
6	7.109	667	703	719	PV	171	5588	24.68%	12.971%
7	7.314	763	775	776	PBA	34	506	2.23%	1.174%

Sum of corrected areas: 43076
Signal : EIC Ion 473.00 (472.70 to 473.70): THC-PC2.D\data.ms

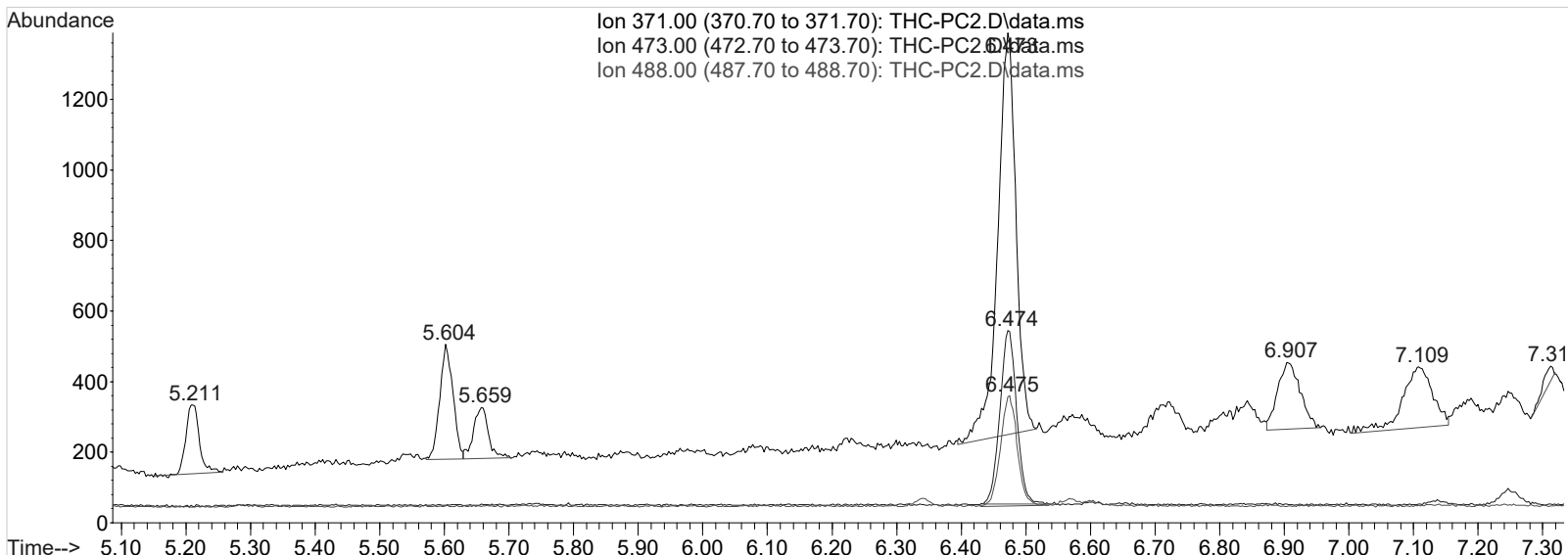
peak #	R.T. min	first scan	max scan	last scan	PK TY	peak height	corr. area	corr. % max.	% of total
1	6.474	469	483	504	BB	492	9001	100.00%	100.000%

Sum of corrected areas: 9001
Signal : EIC Ion 488.00 (487.70 to 488.70): THC-PC2.D\data.ms

peak #	R.T. min	first scan	max scan	last scan	PK TY	peak height	corr. area	corr. % max.	% of total
1	6.475	468	483	504	BV	310	5718	100.00%	100.000%

Sum of corrected areas: 5718

TOX.M Wed Nov 15 07:49:46 2017



Area Percent Report

9

Data Path : C:\My Files\cshrum\Desktop\Consolidated\Data\111417 U CANN\
Data File : THC-C3.D
Acq On : 14 Nov 2017 10:30
Operator : District 5 Forensic Services
Sample : Biorad C3 Control
Misc : C3 Lot # 68440; Worklist 2002
ALS Vial : 3 Sample Multiplier: 1

Integration Parameters: events.e
Integrator: ChemStation

Method : C:\gcms\1\methods\TOX.M
Title :

Signal : EIC Ion 371.00 (370.70 to 371.70): THC-C3.D\data.ms

peak #	R.T. min	first scan	max scan	last scan	PK TY	peak height	corr. area	corr. % max.	% of total
1	5.212	37	44	54	PV	151	1914	15.78%	12.170%
2	5.662	192	201	212	VV	104	1685	13.89%	10.714%
3	6.476	445	484	503	BV 2	561	12131	100.00%	77.116%

Sum of corrected areas: 15730
Signal : EIC Ion 473.00 (472.70 to 473.70): THC-C3.D\data.ms

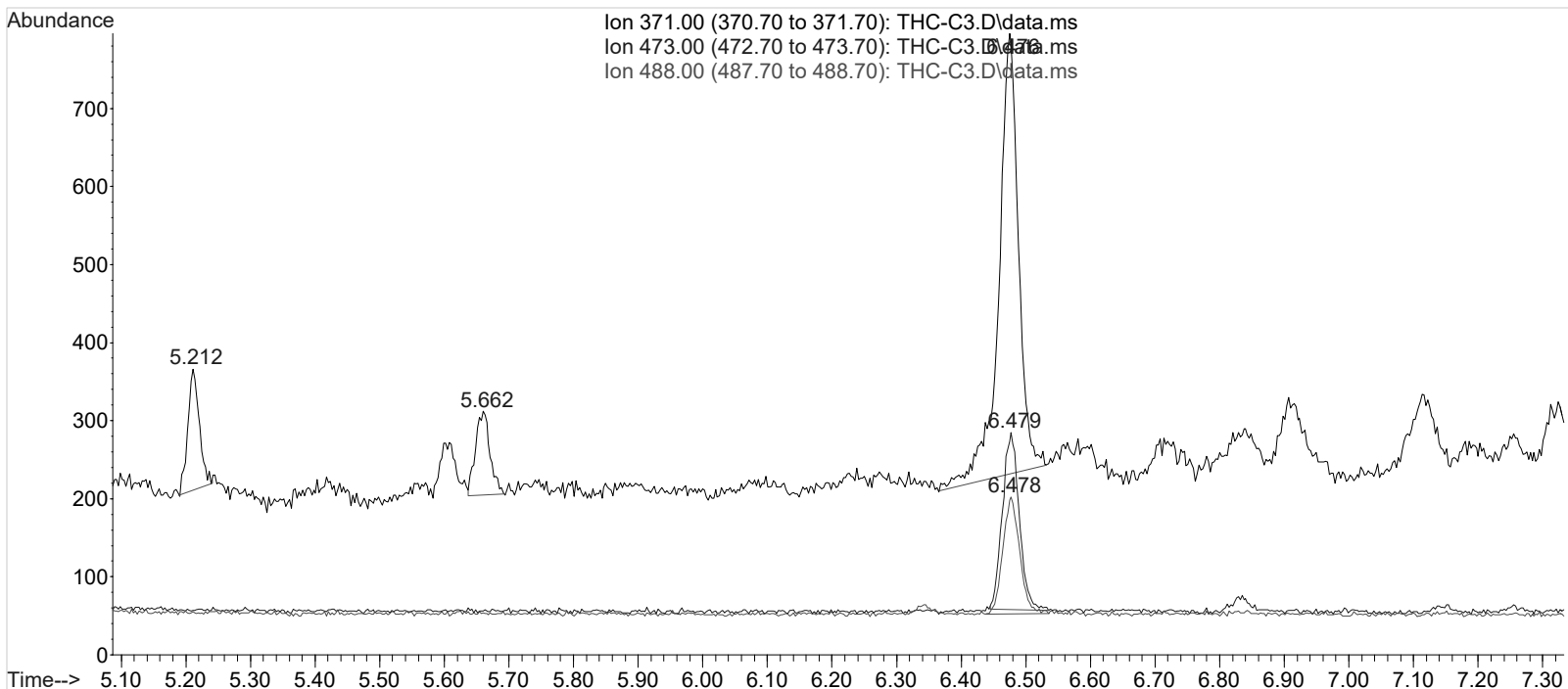
peak #	R.T. min	first scan	max scan	last scan	PK TY	peak height	corr. area	corr. % max.	% of total
1	6.479	473	484	504	BB 2	224	4164	100.00%	100.000%

Sum of corrected areas: 4164
Signal : EIC Ion 488.00 (487.70 to 488.70): THC-C3.D\data.ms

peak #	R.T. min	first scan	max scan	last scan	PK TY	peak height	corr. area	corr. % max.	% of total
1	6.478	470	484	504	BB 2	148	2750	100.00%	100.000%

Sum of corrected areas: 2750

TOX.M Wed Nov 15 07:50:04 2017



2.4.4 Carboxy-THC QC Calculations

Run Date: 11/14/2017

Case Calculations:
Lab Case #: C3 Lot 68440

<i>EIC Ion 371 Corr. Area:</i>	12131	
<i>EIC Ion 473 Corr. Area:</i>	4164	473:371 Ratio: 0.343
<i>EIC Ion 488 Corr. Area:</i>	2750	488:371 Ratio: 0.227

Quality Control Calculations:

Retention Time acceptable range: 6.378 to 6.573

	<i>1st ctrl</i>	<i>2nd ctrl</i>
<i>EIC Ion 371 Corr. Area:</i>	17271	22639
<i>EIC Ion 473 Corr. Area:</i>	6049	9001
<i>EIC Ion 488 Corr. Area:</i>	3773	5718

Approximate minimum corrected area of 371 ion: ~ 3454

<i>Ratio of 473:371</i>				
<i>1st ctrl</i>	<u>0.350</u>	<i>2nd ctrl</i>	<u>0.398</u>	<i>avg.</i>
0.374				
<i>Accepted Range (+/- 20%)</i>				
<u>0.299 - 0.449</u>				

<i>Ratio of 488:371</i>				
<i>1st ctrl</i>	<u>0.218</u>	<i>2nd ctrl</i>	<u>0.253</u>	<i>avg.</i>
0.236				
<i>Accepted Range (+/- 20%)</i>				
<u>0.188 - 0.283</u>				

Carboxy-calculation sheet
Revision 0 effective date 10/23/13
Issuing authority: Quality Manager